

## INSTALLATION QUICK GUIDE

PRODIGI



### 1. Keyboard

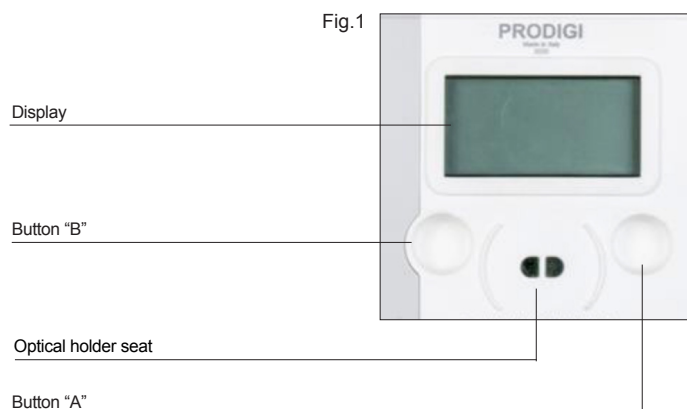
The PRODIGI device features a display and a two-button keyboard:

Button A: menu navigation

Button B: secondary screens / valve control

The display is normally off and is activated by pressing Button A. Upon activation, the main totalizer is shown on the main screen.

Fig.1



### 2. Display

The display shows consumption data and, through consecutive presses of Button A, cycles through the following parameters:

IDENTIFIER MENU	DESCRIPTION
T	Volume totalizer
ID	Tariff program identifier
PT	Measurement point identifier
	Force push transmission
T1	Tariff band 1 totalizer
T2	Tariff band 2 totalizer
T3	Tariff band 3 totalizer
TA	Alarm volume totalizer
SD	Device status
SV	Shut-off valve status
DG	Diagnostics
TH	Volume totalizer (previous period)
T1 H	Tariff band 1 totalizer (previous period)
T2 H	Tariff band 2 totalizer (previous period)
T3 H	Tariff band 3 totalizer (previous period)
TA H	Alarm volume totalizer (previous period)
Qv	Maximum conventional flow rate
PT H	Tariff program identifier (previous period)
DF	Billing period closing date
Qv	Maximum conventional flow rate (previous period)
H	Time
D	Date
MU	User message
MUID	Firmware version identifier

### 3. Valve Opening

To open the valve, authorization from the distribution company is required.

Procedure:

- 1.Navigate to the SV (Valve Status) screen.
- 2.Press and hold Button B until the valve fully opens.
- 3.Confirm that the status shown under SV changes from 40 (ENABLED FOR OPENING) to 40 (OPEN).



Fig. 2

### 4.Commissioning

The "Stock Mode" is a state in which the meter is inactive and not communicating. Before installing the meter, disable the "Stock Mode" by following these steps:

1. Turn on the display by pressing the right button (A) for 3 seconds; the word "Stock" will appear (as shown in the figure).
- 2.Press both buttons, "A" and "B," simultaneously.

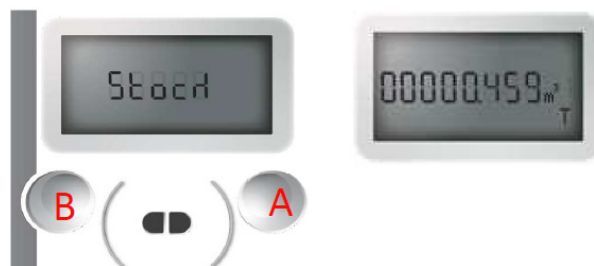


Fig. 3

### 5. Verification of the connection to the CLOUD platform

After physically installing the meter, it is possible to force a transmission to the Cloud platform.

To force a transmission, follow the procedure below:

- 1.Turn on the display by holding down button "A".
- 2.Press button "A" twice (2) to navigate to the PT screen.
- 3.When the text "F3TA" appears in the upper-left corner, the device is ready to perform the "Push".
- 4.Press and hold the left button (B) until the following symbol is displayed: (place your image here)



Fig. 4

- 5.Wait at least 3 minutes and check on the portal/App that the date and time of the last connection match the moment when the transmission was forced.



Fig. 5

Disposal of the device, packaging, and manual:

	Electronic device	Dispose of it as electronic waste at an authorized WEEE collection and treatment center.
	Packaging	Dispose of it as recyclable paper in accordance with local regulations..
	Manual /Guide	

HITEKS - Powered by Shitek Technology

Registered office: Via Malerbe, 3 – 36040 Grumolo delle Abbadesse (VI) – ITALY  
Headquarters: Via del Lavoro, 20/22 – 36040 Grisignano di Zocco (VI) – ITALY